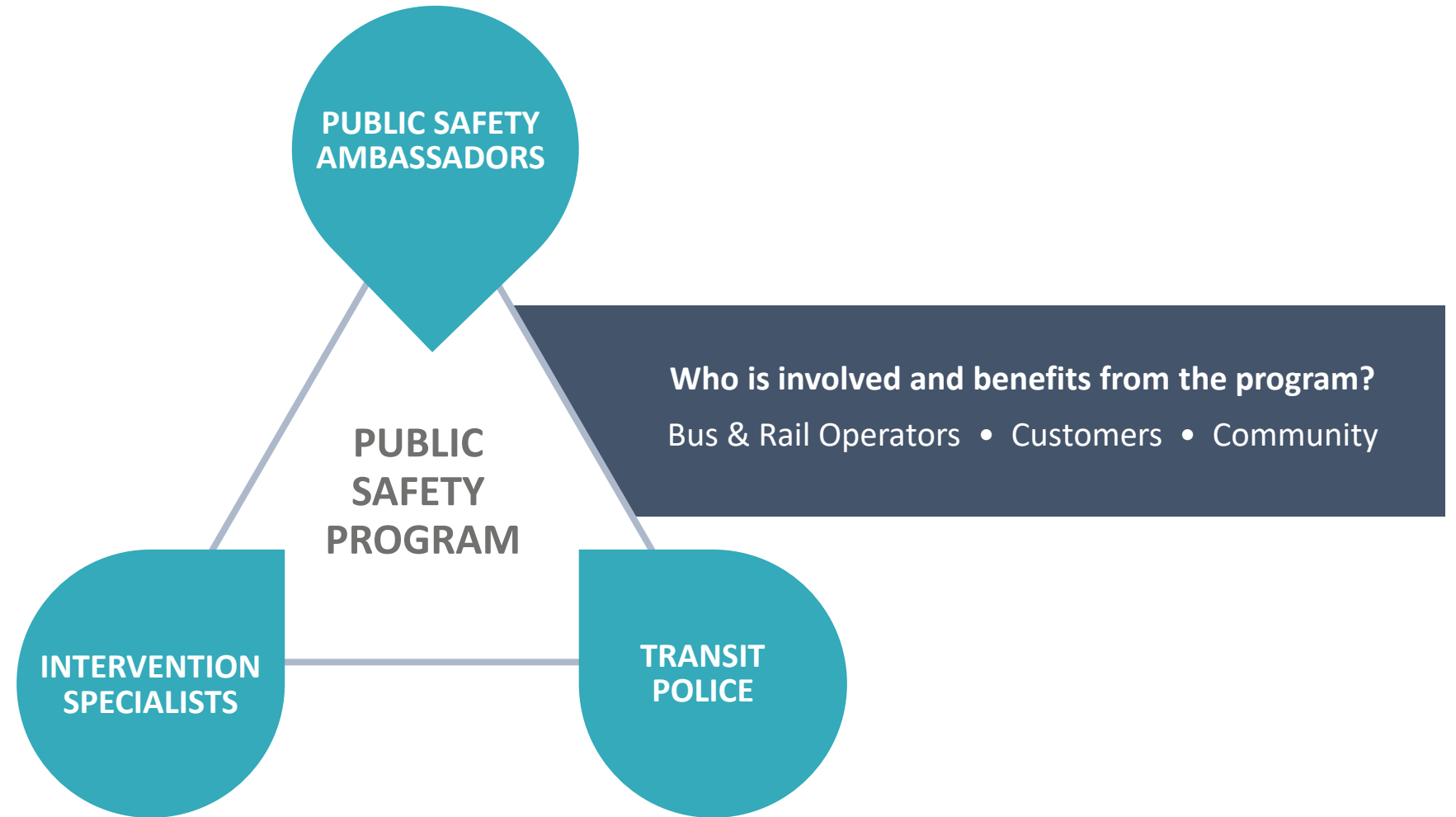


CapMetro Public Safety Vehicle Procurement

December 17, 2021

*Darryl Jamail, Sr. Director Public Safety & Emergency Management
Andrew Murphy, Director, Vehicle Maintenance*

CapMetro's Public Safety Approach



10 Public Safety Vehicles

- **10 Ford Explorer vehicles**

- Equipped with “heavy duty” options (such as modified suspension and tires) to allow more situational flexibility, extended vehicle life with 24/7 operation, and increased safety when responding to calls

- **Primary Users:** Public Safety Ambassadors and Intervention Specialists

- **Types of Use:**

- Responding to crashes involving buses
- Responding to needs within CapMetro right of way
- Traveling throughout the system with public safety response to meet customer and operator needs
 - Moving safety equipment and teams throughout system

Ford Explorer





METRO

THANK YOU!