

AUSTIN TRANSIT

PARTNERSHIP

IN PARTNERSHIP WITH



CapMetro

Austin Light Rail: Recommendation

June 2, 2023



AUSTIN LIGHT RAIL IMPLEMENTATION PLAN

—

AUSTIN LIGHT RAIL
PHASE I

—

AUSTIN LIGHT RAIL
PHASE I
PRIORITY EXTENSION

—

FUTURE
AUSTIN LIGHT RAIL

MAJOR TRANSFER
POINT

PARK & RIDE

9.8
MILES OF NEW
LIGHT RAIL

15
LIGHT RAIL
STATIONS

TRANSIT CONNECTIONS

METRORAPID RED LINE

HIGH FREQUENCY
BUS PROPOSED
GREEN LINE

ESTIMATED TRAVEL TIME

23 MINS 38TH - OLTORF

31 MINS 38TH - YELLOW JACKET

ESTIMATED AVG. # OF DAILY RIDERS SERVED
(2040)

28,500

20,000+
AFFORDABLE HOUSING UNITS SERVED
(SUBSIDIZED)

ACCESS TO

136,000+ CURRENT JOBS

200,000+ FUTURE JOBS

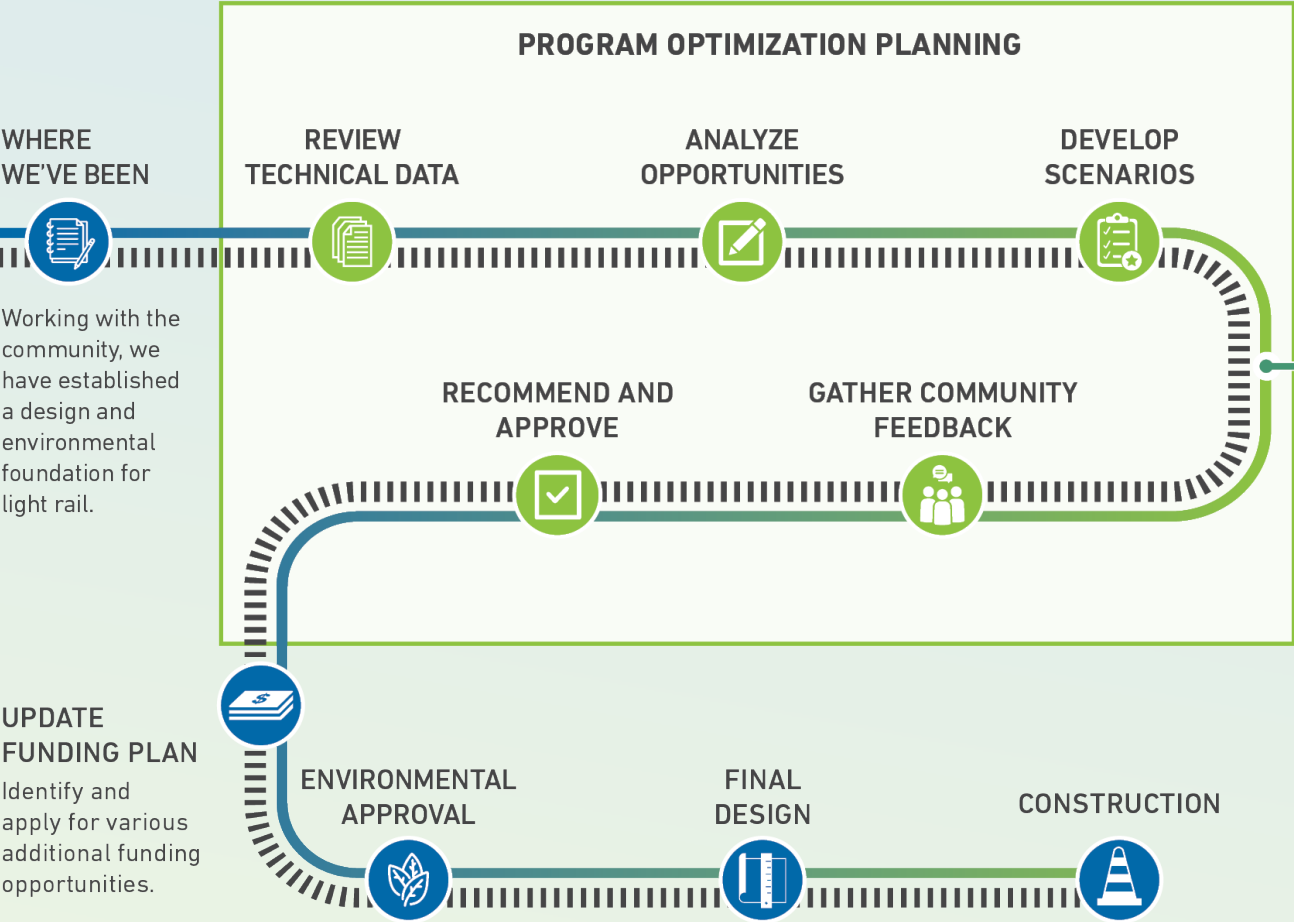
ANTICIPATED CAPITAL COST (CURRENT DOLLARS)

\$4.5-\$4.8B

LOCAL AND FEDERAL DOLLARS



PROGRAM PROCESS



COMMUNITY DIALOGUE

LIGHT RAIL OPTIONS



MULTILINGUAL COMMUNICATIONS



IN-PERSON ENGAGEMENT



8,000+ PEOPLE ENGAGED



5,600+ TOTAL COMMENTS



91 ACTIVE ENGAGEMENT ACTIVITIES



45 BUS STATION AND TRAIN STATION OUTREACH LOCATIONS

WEBSITE



19,397 VIEWS (ENGLISH+SPANISH)

2,017 PARTICIPANTS (ENGLISH+SPANISH)

5,049 COMMENTS (ENGLISH+SPANISH)



67K+ WEBSITE PAGE VIEWS (COMBINED ACROSS ALL PAGES ON ATPTX.ORG)

OVERALL E-NEWSLETTER STATS



42K+ TOTAL RECIPIENTS REACHED

806 TEXT MESSAGE RECIPIENTS

57.2% AVERAGE UNIQUE OPEN RATE

OVERALL SOCIAL MEDIA STATS



19K PAGE REACH ON ATP SOCIAL MEDIA ACCOUNTS

54K POST IMPRESSIONS

15K USERS REACHED

WHAT WE HEARD



[...] Affirms that surface-running light rail is a good option to address the cost estimates for the Project Connect light rail plan.

-Urban Transportation Commission



RECA recommends ATP staff to choose the 38th to Oltorf to Yellow Jacket option.

-Real Estate Council of Austin (RECA)



TTC encourages ATP to have the light rail line cross Lady Bird Lake at the Trinity Street location.

-The Trail Conservancy



While all options are undoubtedly better than the current lack of any light rail, the working group has recommended the 38th to Oltorf to Yellow Jacket option because it lays the best foundation for the city overall.

-AURA - Austin for Everyone

Top Community Feedback Themes

- Supported the advancement of a light rail project that moves Austinites where they need and want to go
- Prioritized Mobility, Customer Service, and Access to Opportunities
- Focused on greater coverage, seamless integration with other transportation options, expandability of the system and affordably reaching key destinations including schools, medical centers, job centers, as well as areas around Austin including the airport, downtown, and the University of Texas
- Explored endpoint alternatives, expressed sentiments related to environmental impacts and benefits, and land use and housing

Community Advisory Committee (CAC)

The Austin Light Rail Implementation Plan is consistent with the CAC recommendation based on community feedback, conversations with stakeholders and staff, data analysis, and alignment with System-Wide Design Principles.

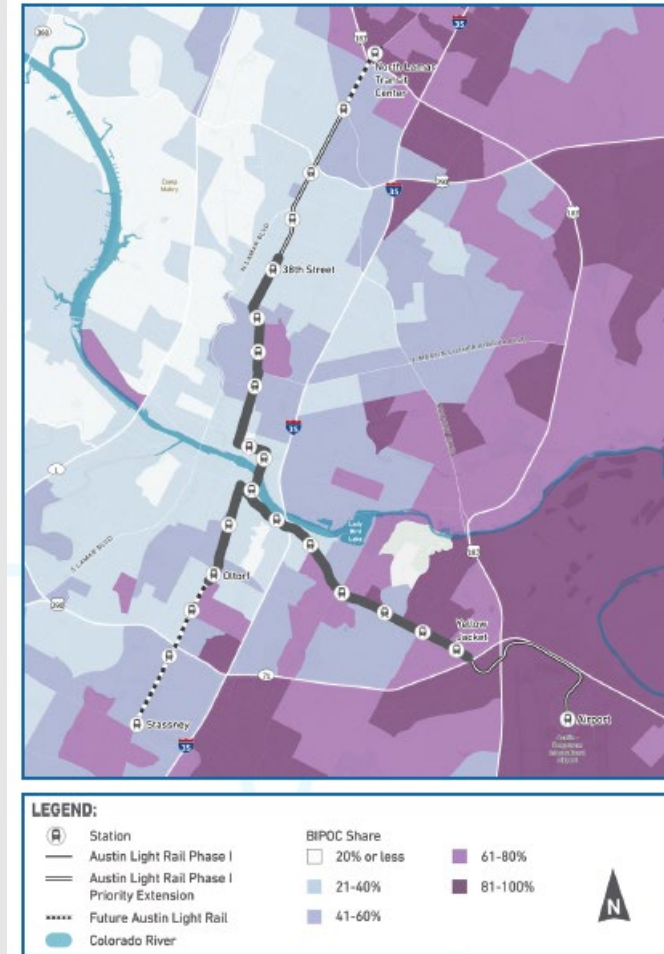




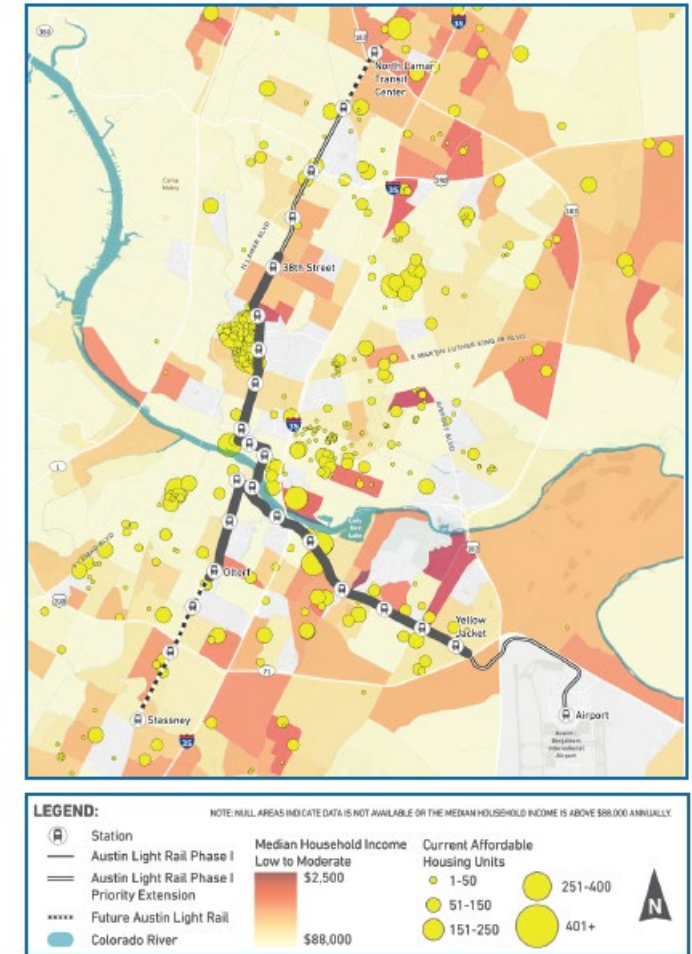
PRIORITIZE MOBILITY SOLUTIONS FOR HISTORICALLY UNDERSERVED COMMUNITIES

- Builds new infrastructure to serve historically underinvested areas
- Serves Black, Indigenous, & People of Color (BIPOC) communities, affordable housing units, lower income areas, and households that are more dependent on public transportation
- Connects communities with job centers and destinations throughout Austin

BIPOC Share of Population



Affordable Housing & Income

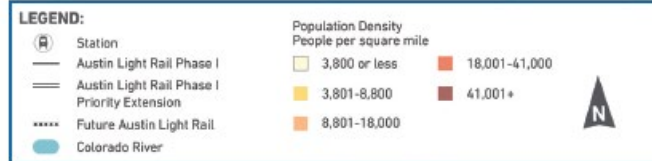
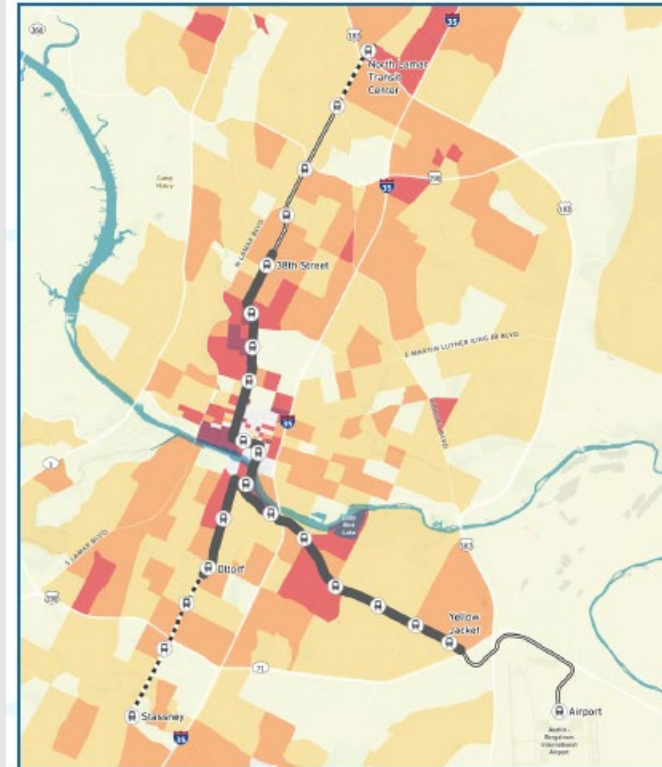




CONNECTING PEOPLE TO WHERE THEY NEED AND WANT TO GO

- Connects to job centers, education, medical centers, and downtown
- Provides access extending north, east, and south
- Generates strong ridership, and includes high ridership stations at UT, downtown, and Pleasant Valley/Riverside

2045 Population Density



2045 Total Jobs





- 

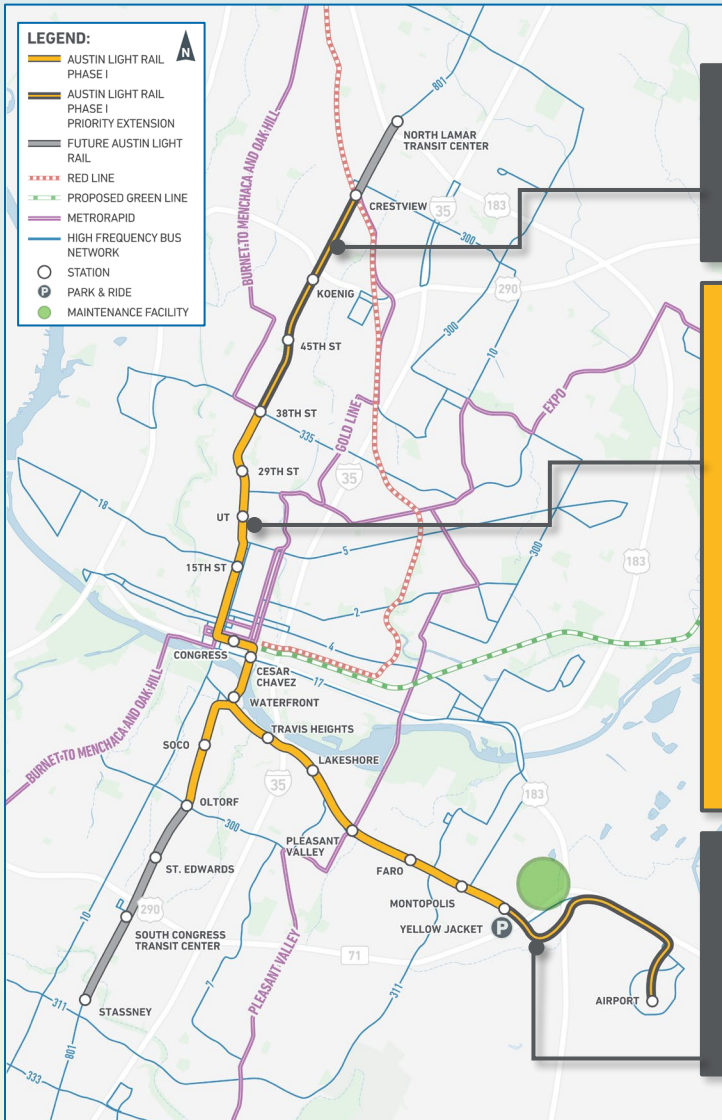
LEGEND:

- AUSTIN LIGHT RAIL PHASE I
- AUSTIN LIGHT RAIL PHASE I PRIORITY EXTENSION
- FUTURE AUSTIN LIGHT RAIL
- RED LINE
- PROPOSED GREEN LINE
- METRO RAPID
- HIGH FREQUENCY BUS NETWORK
- STATION
- PARK & RIDE
- MAINTENANCE FACILITY

The map displays the Austin Light Rail network with the following stations and features:

- Stations:** STASSNEY, SOUTH CONGRESS TRANSIT CENTER, ST. EDWARDS, OLTOF, SOCO, CONGRESS, WATERFRONT, CESAR CHAVEZ, TRAVIS HEIGHTS, LAKESHORE, PLEASANT VALLEY, FARO, MONTOPOLIS, YELLOW JACKET, AIRPORT.
- Lines:**
 - Orange Line:** Connects STASSNEY to AIRPORT via SOUTH CONGRESS TRANSIT CENTER, ST. EDWARDS, OLTOF, SOCO, CONGRESS, WATERFRONT, TRAVIS HEIGHTS, LAKESHORE, PLEASANT VALLEY, FARO, MONTOPOLIS, and YELLOW JACKET.
 - Yellow Line:** Connects STASSNEY to SOUTH CONGRESS TRANSIT CENTER.
 - Purple Line:** Connects CONGRESS to ST. EDWARDS via OLTOF and SOCO.
 - Pink Line:** Connects CONGRESS to WATERFRONT via CESAR CHAVEZ.
 - Red Line:** Connects CONGRESS to TRAVIS HEIGHTS via CESAR CHAVEZ.
 - Green Line:** Connects CONGRESS to LAKESHORE via TRAVIS HEIGHTS.
 - Blue Line:** Connects CONGRESS to ST. EDWARDS via OLTOF and SOCO.
 - Grey Line:** Connects CONGRESS to ST. EDWARDS via OLTOF and SOCO.
 - Black Line:** Connects CONGRESS to ST. EDWARDS via OLTOF and SOCO.
 - Light Blue Line:** Connects CONGRESS to ST. EDWARDS via OLTOF and SOCO.
 - Light Green Line:** Connects CONGRESS to ST. EDWARDS via OLTOF and SOCO.
 - Light Purple Line:** Connects CONGRESS to ST. EDWARDS via OLTOF and SOCO.
 - Light Orange Line:** Connects CONGRESS to ST. EDWARDS via OLTOF and SOCO.
 - Light Yellow Line:** Connects CONGRESS to ST. EDWARDS via OLTOF and SOCO.
 - Light Grey Line:** Connects CONGRESS to ST. EDWARDS via OLTOF and SOCO.
 - Light Black Line:** Connects CONGRESS to ST. EDWARDS via OLTOF and SOCO.
 - Light Light Blue Line:** Connects CONGRESS to ST. EDWARDS via OLTOF and SOCO.
 - Light Light Green Line:** Connects CONGRESS to ST. EDWARDS via OLTOF and SOCO.
 - Light Light Purple Line:** Connects CONGRESS to ST. EDWARDS via OLTOF and SOCO.
 - Light Light Orange Line:** Connects CONGRESS to ST. EDWARDS via OLTOF and SOCO.
 - Light Light Yellow Line:** Connects CONGRESS to ST. EDWARDS via OLTOF and SOCO.
 - Light Light Grey Line:** Connects CONGRESS to ST. EDWARDS via OLTOF and SOCO.
 - Light Light Black Line:** Connects CONGRESS to ST. EDWARDS via OLTOF and SOCO.

AUSTIN LIGHT RAIL PHASE 1 AND PRIORITY EXTENSIONS



Priority Extension: 38th to Crestview

- Opportunity to partner with CapMetro to grade separate the Red Line, to improve conditions at the nearby traffic intersection for all users and enable an on-street light rail service

Phase 1: 38th to Oltorf to Yellow Jacket

- Provides north, south and east coverage that best lays foundation for future expansions/extensions
- Builds new infrastructure to serve historically underinvested areas
- Reaches BIPOC communities and lower income households
- High number of possible transit connections
- Includes high ridership stations
- Connects people to jobs and education
- Creates jobs with new maintenance facility
- Close to airport to facilitate connection
- Advances ASMP goals for mode shift
- Connects to east side of downtown via Trinity St. river crossing

Priority Extension: Yellow Jacket to Airport

- Coordination with Airport Expansion and Development Program on light rail connection and station at the airport; Opportunity to leverage other funding sources

NEXT STEPS

▶ **JOINT PARTNERSHIP MEETING** | June 6th, 2023

**AUSTIN
TRANSIT
PARTNERSHIP**

THANK YOU!